

The Portable Drill

The Portable Power Drill Safety Sheet

DO'S

- Always ensure the work you are drilling is clamped firmly to the workbench
- Wear safety glasses or a face shield (with safety glasses or goggles).
- Always use sharp drill bits
- Disconnect power supply before changing or adjusting bit or attachments.
- Tighten the chuck securely. Remove chuck key before starting drill.

DON'TS

- Don't hold work in the hand while drilling.
- Do not run overheat the drill by running it for an excessive period without stopping.
- Do not touch or try and remove tool bit immediately after operation. They are hot.

Question 1.

Choose whether the statement is true or false

I have read and understood the DO'S AND DON'TS on the safe use of the portable Battery Drill and Corded Drill. The Portable Drill use has been clearly demonstrated and explicitly explained to me by my teacher.

()



True

()

False

Question 2.

Drag the words and drop them to the appropriate places

Portable drills motors can produce _____ Do not use portable drills or any power tools near varnish, thinners or petroleum _____. It may result in a _____.

Question 3.

Point at the correct area(s) on the image.

- The Trigger
- The "Back" of the drill
- The Drill Bit
- The Chuck



Question 4.

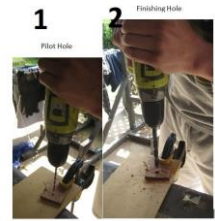
Look at the correct method of drilling as shown in the picture. Drag the words and drop them to the appropriate places



_____ hands should be used when drilling. Hold the drill as _____ as possible. Place one hand on the _____ of the drill as shown in the picture.

Question 5.

The picture shows the correct procedure to drill a large hole. (CLICK TO ENLARGE). Choose 2 answers that describe the 2 steps.



- He needs to drill a large hole. He starts by drilling a smaller pilot hole first that will reduce the chance of the larger drill bit sticking and possibly causing an accident.
- He is taking the risk by drilling with an over large drill bit.
- By drilling a pilot hole, he reduces the chance of both injury and damaging his work.
- He just drills using the large bit to save time.

Question 6.

Drag the words and drop them to the appropriate places.

When making a drilling operation, you should always _____ down your work.

Question 7.

Drag the words and drop them to the appropriate places

Do not _____ with one hand while holding the material with the _____.

Question 8.

When starting a drilling operation, drill slowly at first and gradually increase the drill speed when safe.

- True
- False

Question 9.

Drag the words and drop them to the appropriate places



When drilling a large _____, don't start with the biggest bit. Use a _____ bit first to drill out a _____ hole. This will both guide the larger bit and _____ the chance of the bit grabbing the material.

Question 10.

Select one or more correct answers from the choices below about the safe use of portable drills.

- When drilling a large hole, always drill a smaller pilot hole first
- I smell varnish and petrol fumes. I can use a portable drill in the area.
- A portable drill is good because I can lean my whole body weight on the drill and force in the bit.
- Never use a bent or blunt drill bit.

Question 11.

Indicate where the user should place their other hand to ensure stability and sufficient downward force.



Question 12.

Drag the words and drop them to the appropriate places

When using a portable _____, it is important to keep your work area _____
_____ benches invite accidents.

Question 13.

Drill bits can be very hot immediately after use.

(Type: True/False, Points: 10, Attempts: 1)



- True
- False